

outages are for the birds.



wildlife outage protectors product catalog

Wildlife Outage Protectors...the long-term solution to reduce or eliminate power outages caused by wildlife.

INSULBOOT[®]
KEEPING THE POWER ON AND WILDLIFE SAFE! **WLOP**

InsulBoot[®] The Wildlife Outage Pro's

37 Appletree Lane P.O. Box 450 • Plumsteadville, PA 18949 • Phone 215.766.2020 • Toll-Free 800.262.2111 • Fax 215.766.2222
wildlifeoutageprotectors.com

the wildlife advantage.



Power outages caused by wildlife have long been a big and expensive problem for utility companies.

Our **Wildlife Outage Protectors** are designed to prevent electrocution of bird and animal wildlife and the resulting incidence of power outages.

Our products are built to work...and last.

Wildlife Outage Protectors are designed for years of effective service in all weather conditions. They are molded from Arbosol[®], a proprietary polyvinyl chloride (PVC) material that produces a seamless, heavy duty, resilient molded product. It is formulated specifically for electrical applications at high voltages.

Product benefits include:

- Protects unscheduled outages caused by wildlife
- Reduces or eliminates PUC fines and penalties
- UV protected for extended life
- High insulation factors
- Flame retardant properties
- Extreme temperature resistance
- Very cost effective
- Installed, removed or replaced safely & easily

If you have wildlife outage problems, we have the solutions.

Wildlife **Outage Protectors** are today's preferred solution to prevent both wildlife electrocutions and outages. And our products offer a number of tangible advantages over our competitors.

- Price quotes in 24 hours or less
- Design assistance and CAD drawings
- Most standard designs in stock
- Custom designs to your specifications
- Production on standard designs usually within 48 hours
- Continuous quality improvement procedures
- In-house tool & die shop
- In-house formulation lab
- Proven, proprietary PVC material
- Choice of colors available
- In house mechanical/electrical testing up to 38 KV

Need a custom part designed? Not a problem.

We offer FREE design services for clients who need a custom part developed. Since we manufacture our own tooling, we can produce a finished part in far less time and for less money than you might expect.

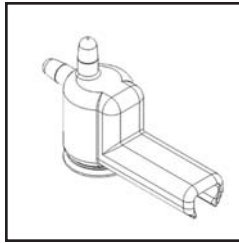
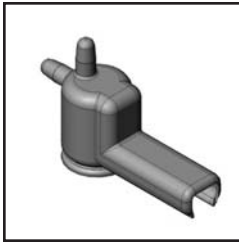
We encourage you to put our three decades of experience, innovation and leadership on the line for you.

Representative sampling of product available.

To order or ask about our FREE design services call, email or fax using our FastFax form in the back of this catalog.

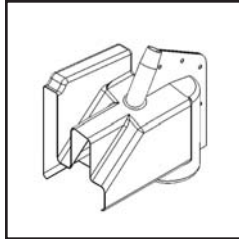
Toll-Free 800.262.2111 • sales@insulboot.com • Fax 215.766.2222 • wildlifeoutageprotectors.com

CUT OUT COVERS



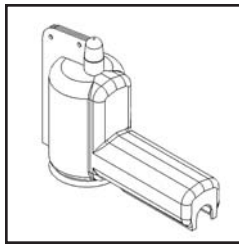
PDM 5073

Ø 3" Insulator, 4.42"H x 7.25"L Standard Cut Out cover.



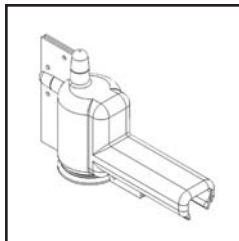
PDM 5378

Cut-out switch protectors for LBU II cutout. Made in stiffer material, and Matte Gray finish.



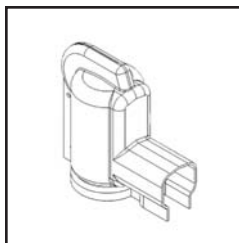
PDM 5849

3.5" Insulator, 6.19"H x 10.52"L Standard Cut Out cover with Fin opening for Retrofit applications.



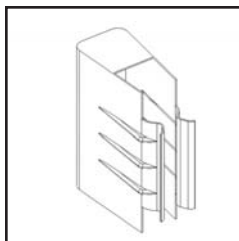
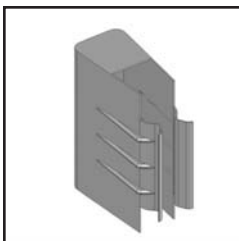
PDM 4991

Ø 3" Insulator, 4.94"H x 8.25"L Standard Cut Out cover with Fin opening for Retrofit applications.



PDM 6510

Ø 3.5" Insulator, 6"H x 5.25"L Standard Cut Out cover with Fin opening for Retrofit applications.



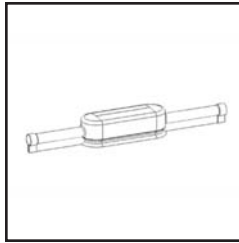
PDM 7700 "NEW" Hot Stickable Cutout Cover

Temporary, reusable cut-out cover.

To order or ask about our **FREE design services** call, email or fax using our FastFax form in the back of this catalog.

Toll-Free 800.262.2111 • sales@insulboot.com • Fax 215.766.2222
wildlifeoutageprotectors.com

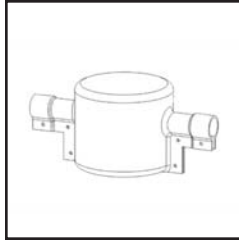
SINGLE & DOUBLE PIN INSULATORS



PDM 4998-5001

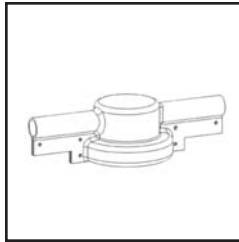
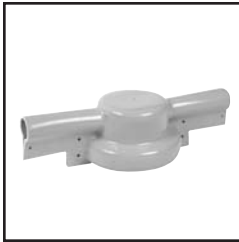
Double Pin Insulator Cover, 8" Centers, 1.25" Dia. Cable Openings and 28" OAL.
Double Pin Insulator Cover, 10" Centers, 1.25" Dia. Cable Openings and 30" OAL.
Double Pin Insulator Cover, 12" Centers, 1.25" Dia. Cable Openings and 32" OAL.
Double Pin Insulator Cover, 14" Centers, 1.25" Dia. Cable Openings and 34" OAL.

Order # PDM 7561 for overall length "36 option.



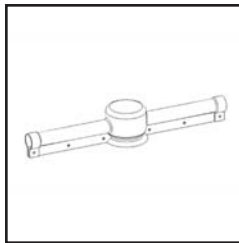
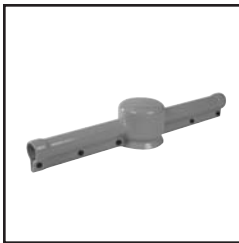
PDM 5637

Single pin insulator. 7.0" diameter. Fits Lapp insulator #4255-70.



PDM 5638

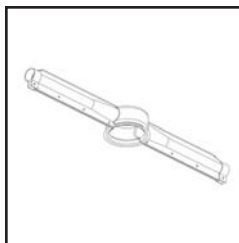
Single pin insulator cover, 6.50" diameter. Fits Lapp insulator #510091.



PDM 2514

Standard 4.5" Pin Insulator Cover. 1.2" Cable Opening and 22" Overall.

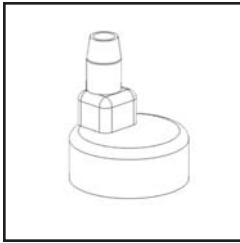
Order # PDM 7560 for overall length "36 option.



PDM 7860

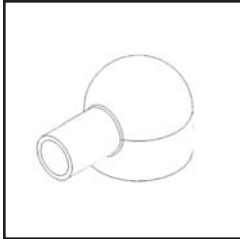
Ø 5.00" with Ø 1.25" cabl, 34.00" overall.

LIGHTNING ARRESTORS



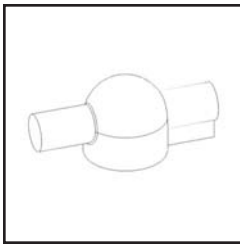
PDM 4161

4.75" OD LA Cap, with 0.50-0.90" Lead out of top. 6" OAH.



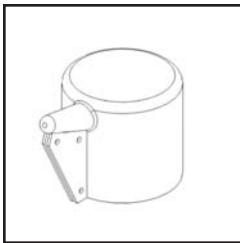
PDM 4784

2.5" Capacitor Bushing or LA Cap. Single 1.0" Lead and 2.5" OAH.



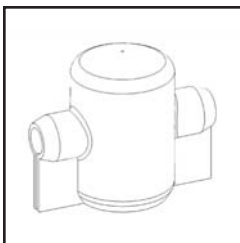
PDM 4783

2.5" OD Capacitor Bushing or LA cap with double 1.0" Leads, and Closure Fin. 2.5" OAH.



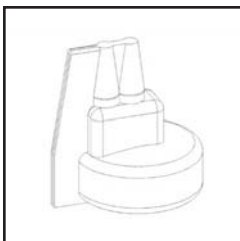
I-0444

5" LA Cap, with double cable leads, and fin closure on one side. Nylon Closure Hardware provided.



PDM 4299

3" LA or Capacitor Bushing cap with 2.5" opening & 0.88" Diameter "thru" cable openings.



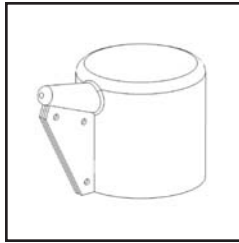
PDM 4010

4.5" OD LA Cap with Double 0.40" Cable Taps. 6.5" OAL.

To order or ask about our **FREE design services** call, email or fax using our FastFax form in the back of this catalog.

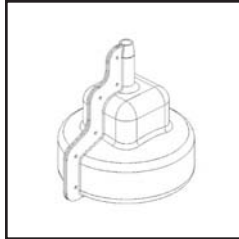
Toll-Free 800.262.2111 • sales@insulboot.com • Fax 215.766.2222
wildlifeoutageprotectors.com

LIGHTNING ARRESTORS



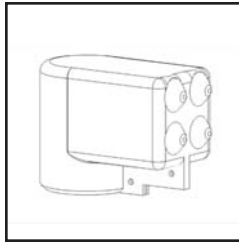
I-0270

4.75" OD LA Cap, 5" High with single lead tap, at 75 Deg to LA Center Line.



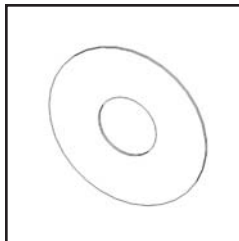
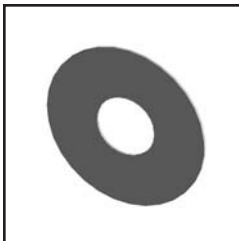
PDM 3874

Station Class LA boot, with single cable lead. 8" Opening and fits over 10" LA cap.



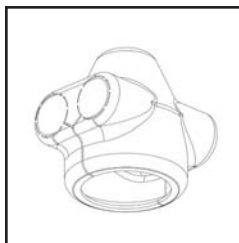
I-0434

3" LA/SA or Bushing cap with Single 0.5" Lead, Straight out top.



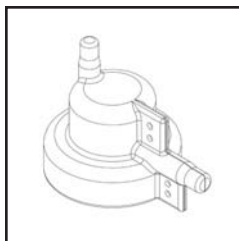
PDM 5710

Washer, \varnothing 3.5"ID x \varnothing 9.5"OD x .12" thick.



PDMMX 0362

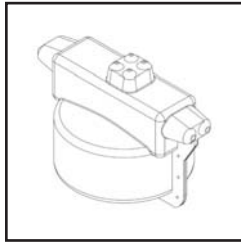
\varnothing 1.75" Capacitor Cap with dual cable exits.



PDM 8079

\varnothing 4.50" O.D. with 2 \varnothing .50" lead options at 90 Deg.

LIGHTNING ARRESTORS



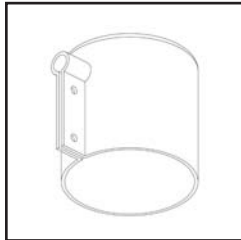
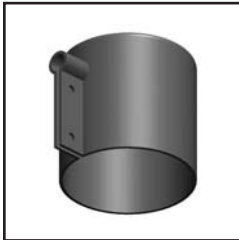
PDM 8101

Ø 13.50" with multiple cable outlet options.



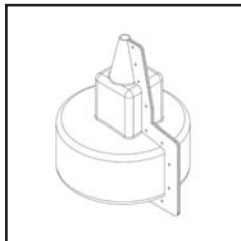
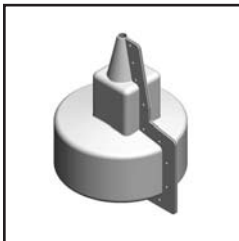
PDM 8102

Ø 8.00" with multiple cable outlet options.



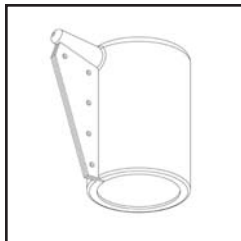
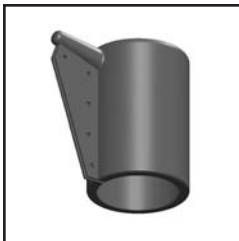
PDM 8128

Ø .625" single lead at 90 Deg.



PDM 8286

Ø 13.50" with single cable exit.



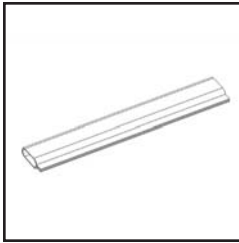
PDM 8314

Ø 4.50 with 15" single cable exit.

To order or ask about our **FREE design services** call, email or fax using our FastFax form in the back of this catalog.

Toll-Free 800.262.2111 • sales@insulboot.com • Fax 215.766.2222
wildlifeoutageprotectors.com

SLEEVE & STIRRUP COVERS



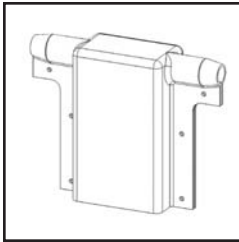
PDM 4748

Dual 1.5" OD Cable Cover - Sleeve. 36" OAL.



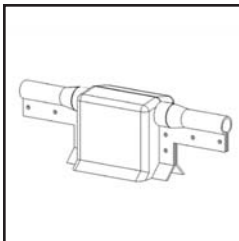
PDM 4637

48" OAL Line/Cable sleeve, with 1.25" ID and 1" mating overlap at end.
(Mates with Pin insulators)



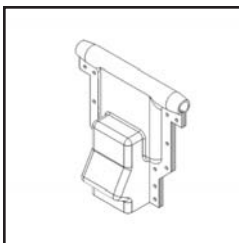
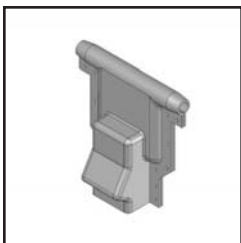
PDM 5029

Stirrup cover, for Stirrup Line taps that do not meet the minimum clearance between lines.



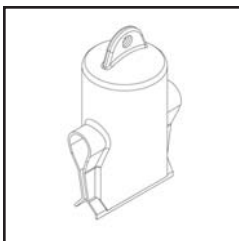
PDM 5381

Stirrup Clamp Cover.



PDM 7754

Stirrup Cover with Hot Line Clamp.



PDM 7995

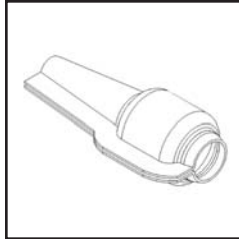
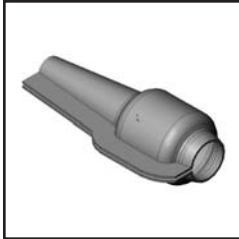
Stirrup Cover.

TRANSFORMER BUSHING COVERS



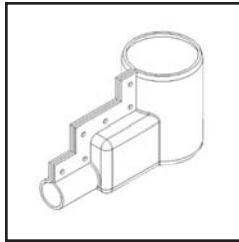
I-0560

Universal Bushing and LA Cap. 3.5" Diameter with 6" High cavity, 9" Overall.



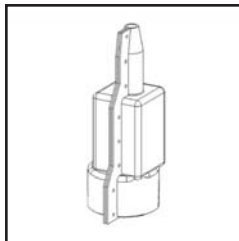
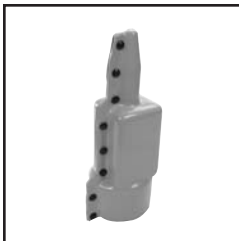
PDM 4227

3" OD Bushing Protector, with 1.75" Opening to hold on to 1st Convolute. Tapered top with 1" opening for Lead, 6" OAH. Fin Closure for retrofit use, Nylon Hardware provided.



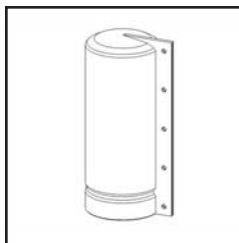
PDM 2938

3.5" Bushing, and 3.38" cut opening for tight fit. Large Spade terminal cavity at 90 Deg. with 1.3" Lead Opening. Fin Closure and Nylon Hardware provided.



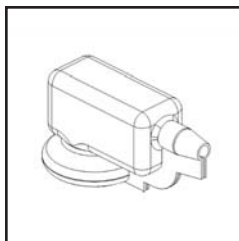
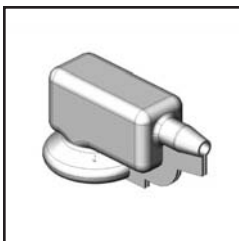
PDM 3495

5" to 5.25" OD Bushing with 4.25" Opening to rest in first convolute of bushing. 0.75 to 1.5" Lead opening and Fin Closure for retrofit use. Nylon Hardware provided.



PDM 5036

4" OD Transformer bushing protector, 10" OAL with fin closure for retrofit use. Closure hardware provided.



PDM 4504

5" OD Bushing, 4" Opening with single cable tap at 90 Deg. to bushing center. 7" Spade terminal cavity.

To order or ask about our **FREE design services** call, email or fax using our FastFax form in the back of this catalog.

Toll-Free 800.262.2111 • sales@insulboot.com • Fax 215.766.2222
wildlifeoutageprotectors.com

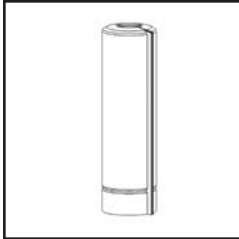


TRANSFORMER BUSHING COVERS



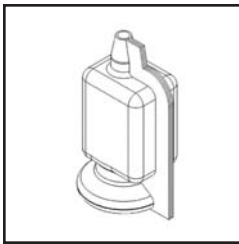
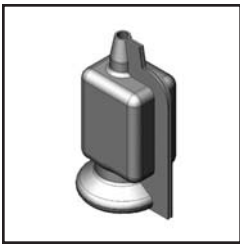
PDM 4611

5" Transformer Bushing Protector, Cylinder type. 36" OAL.



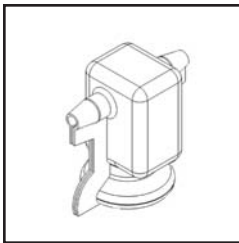
PDM 4509

6" OD Transformer Bushing cover, Cylinder Style with opening seam for retrofit use. 20" OAL.



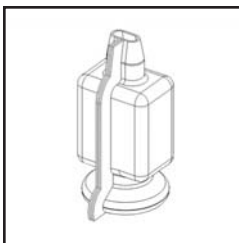
PDM 4508

5" OD Spade Bushing with 4" opening to single cable - Straight.



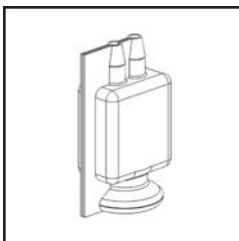
PDM 4507

5" OD Spade Bushing cover with 4" opening and 2 cable taps opposite each other at 90 Deg. to bushing.



PDM 4506

5" OD Spade Bushing with 4" opening to dual 0.72-1.2" Cable (oval) - Straight.



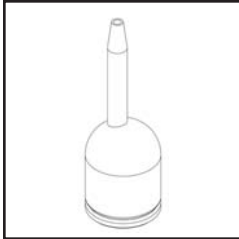
PDM 4505

5" OD Spade Bushing cover with 4" opening to double .72-1.2" cable openings - Straight.

TRANSFORMER BUSHING COVERS



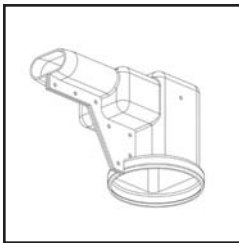
PDM 0358
Ø 8.00", 15.50" overall.



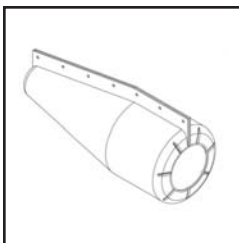
PDM 7761
Ø 4.50", 13.66" overall.



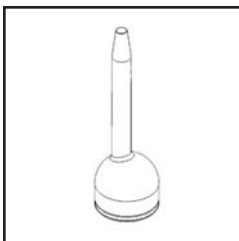
PDM 8218
Ø 6.50" with Ø 1.10 cable exit, 28.00" overall.



PDM 8534
Ø 6.19" with dual cable exit at 90 Deg.



PDM 7884
Ø 7.00", 18.22 overall..

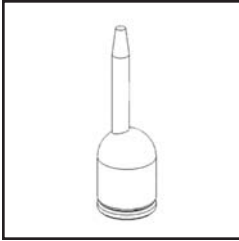


PDM 7182
Transformer Bushing, Ø 4.00" x 3.66" tall.

To order or ask about our **FREE design services** call, email or fax using our FastFax form in the back of this catalog.

Toll-Free 800.262.2111 • sales@insulboot.com • Fax 215.766.2222
wildlifeoutageprotectors.com

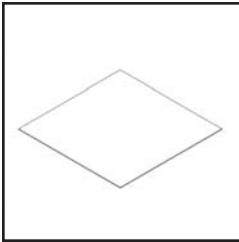
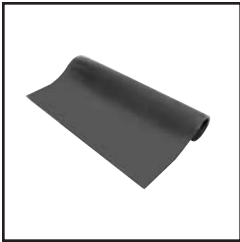
TRANSFORMER BUSHING COVERS



PDM 7282

Transformer Bushing, Ø 4.00" x 5.66" tall.

PVC SHEETS



PVC SHEETS

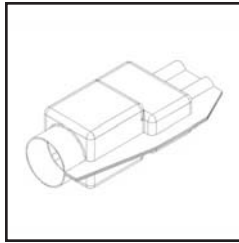
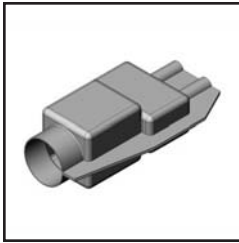
12x12x.093 min. - I-0523

18x18x.093 min. - I-0524

24x24x.093 min. - I-0525

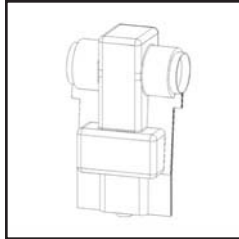
32x32x.093 min. - I-0526

SUBSTATION WILDLIFE PROTECTION



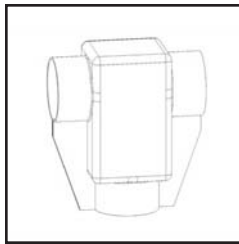
PDM 3892

5.5" OD Bus dead end to Double 1.5" OD Cable Drop. 22.25" OAL.



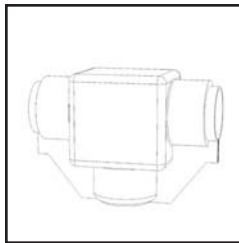
PDM 3891

5.5" OD Bus to Double 1.5" OD Cable Drop, 11.5" OAL & 21" OAH.



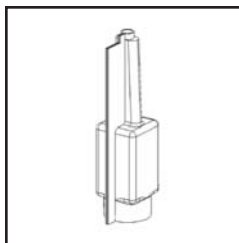
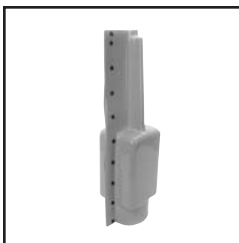
PDM 3890

5.5" OD Bus TEE Splice to 5.5" OD BUS, 13.5" OAL, 14.75" OAH.



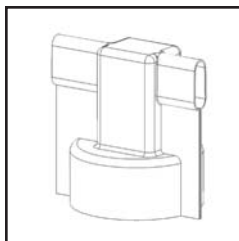
PDM 3889

5.5" OD Bus Standoff Insulator Cover. 15" OAL, 11.75" OAH.



PDM 4749

6" Bushing to Dual 1.5" Cable Port - Straight. 25" OAL.



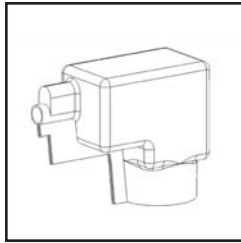
PDM 4747

12" OD LA Cap with double Dual 1.5" Cable Ports, in a TEE across top of LA. 16" OAL.

To order or ask about our **FREE design services** call, email or fax using our FastFax form in the back of this catalog.

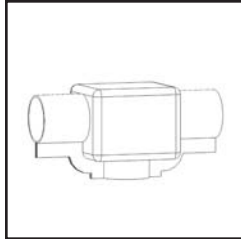
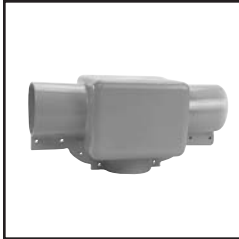
Toll-Free 800.262.2111 • sales@insulboot.com • Fax 215.766.2222
wildlifeoutageprotectors.com

SUBSTATION WILDLIFE PROTECTION



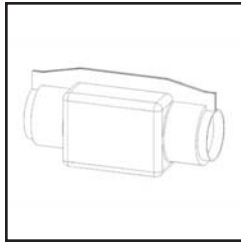
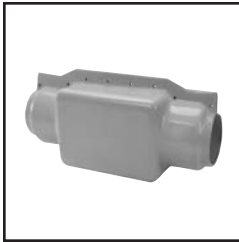
PDM 4746

6.7" Bushing to 1.5" Dual Cable Oval, at 90 Deg to Bushing.



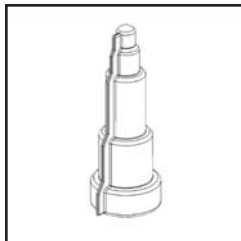
PDM 4745

4.25" Bus OD to 4.25" OD Standoff insulator. 18" OAL.



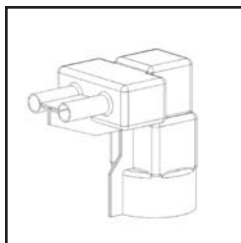
PDM 3888

4.5" to 5.5" OD Round Bus Splice Cover, 18" OAL.



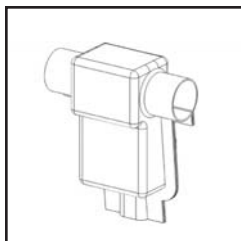
PDM 4116

6.5" to 8" OD Bushing to Single Cable cover. Can be cut and reconfigured for a variety of Bushing to Cable arrangements. Flexibility of boot allows additional uses.



PDM 3887

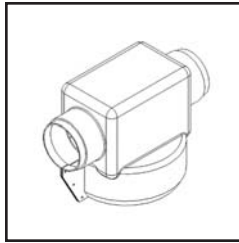
7" OD Transformer Bushing to Double 1.5" OD cables at 90 Deg, and on 4.25" Centers.



PDM 4744

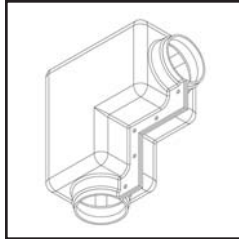
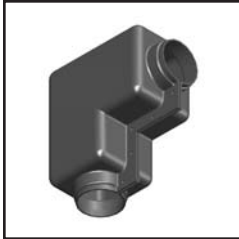
4" OD Bus thru (4.25" boot opening) with dual cable tap (drop).
16" OAL 18" OAH.

SUBSTATION WILDLIFE PROTECTION



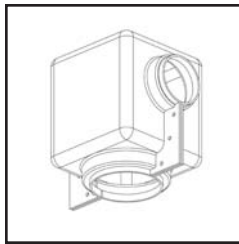
PDM 7729

Ø 5.00" Thru Boot with Ø 11.50"- Ø 12.50" Standoff.



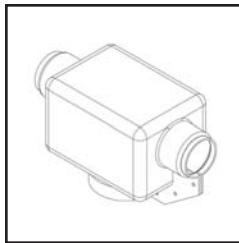
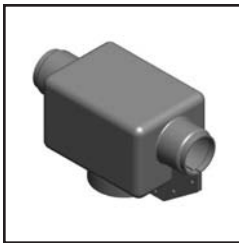
PDM 8049

90 Deg. Ø 3.13" - Ø 3.38" BUS.



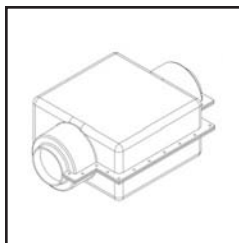
PDM 8050

Ø 5.50" bushing - Ø 3.13" - 3.5" BUS.



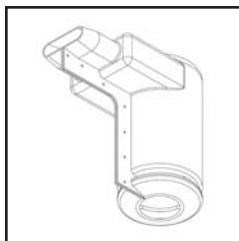
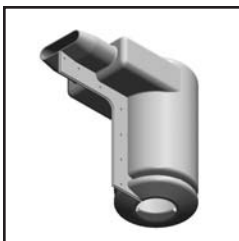
PDM 8209

Ø 4.50" bushing - Ø 2.50" - Ø 3.00" BUS.



PDM 8251

Ø 4.25" - Ø 6.25" BUS.



PDM 8287

Ø 8.00" with dual cable exit at 90 Deg., 15.82" overall.

To order or ask about our **FREE design services** call, email or fax using our FastFax form in the back of this catalog.

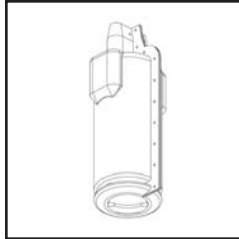
Toll-Free 800.262.2111 • sales@insulboot.com • Fax 215.766.2222
wildlifeoutageprotectors.com

SUBSTATION WILDLIFE PROTECTION



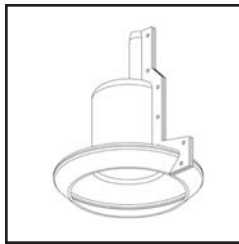
PDM 8288

Ø 10.00" bushing with dual cable exits at 90 Deg., 32.14" overall.



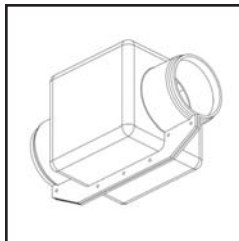
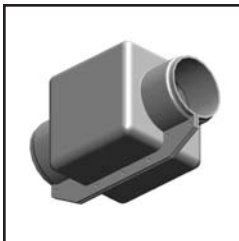
PDM 8289

Ø 8.00" to dual cable exit, 19.38" overall.



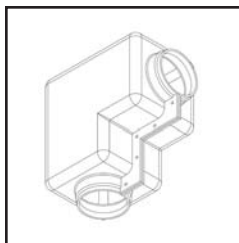
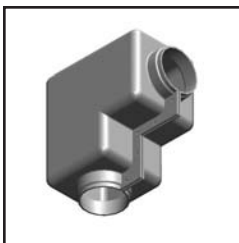
PDM 8394

Ø 9.25" bushing with single cable exit, 7.5" overall.



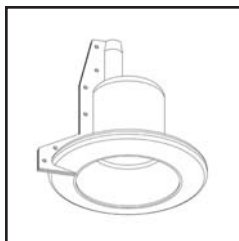
PDM 8402

Thru boot, Ø 5.00" - Ø 5.25" bus.



PDM 8518

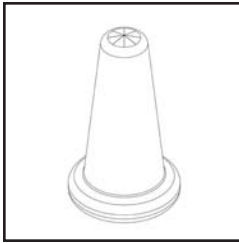
Ø 3.50" - Ø 3.75" bus at 90 Deg.



PDM 8596

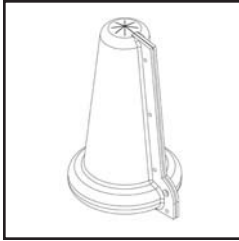
Ø 9.75" bushing with single cable exit, 10" overall.

SUBSTATION WILDLIFE PROTECTION



WLOP 0002

Ø 7.00" 12.50" overall, for new installations.



WLOP 0003

Ø 7.00" 12.50" overall, for new installations.

NOTES

To order or ask about our **FREE design services** call, email or fax using our FastFax form in the back of this catalog.

Toll-Free 800.262.2111 • sales@insulboot.com • Fax 215.766.2222
wildlifeoutageprotectors.com

REQUEST FOR QUOTATION: Custom Products

Use our FREE design service. Use the space below to make a sketch or attach a photograph showing the layout of your conductors and other electrical devices.

CUT OUT COVERS

- PDM 5073 *Quantity:* _____
- PDM 5378 *Quantity:* _____
- PDM 5849 *Quantity:* _____
- PDM 4991 *Quantity:* _____
- PDM 6510 *Quantity:* _____
- PDM 7700 *Quantity:* _____

TRANSFORMER BUSHING COVERS

- I-0560 *Quantity:* _____
- PDM 4227 *Quantity:* _____
- PDM 2938 *Quantity:* _____
- PDM 3495 *Quantity:* _____
- PDM 5036 *Quantity:* _____
- PDM 4504 *Quantity:* _____
- PDM 4611 *Quantity:* _____
- PDM 4509 *Quantity:* _____
- PDM 4508 *Quantity:* _____
- PDM 4507 *Quantity:* _____
- PDM 4506 *Quantity:* _____
- PDM 4505 *Quantity:* _____
- PDM 0358 *Quantity:* _____
- PDM 7761 *Quantity:* _____
- PDM 8218 *Quantity:* _____
- PDM 8534 *Quantity:* _____
- PDM 7884 *Quantity:* _____
- PDM 7182 *Quantity:* _____
- PDM 7282 *Quantity:* _____

PVC SHEETS

- PVC SHEETS *Quantity:* _____

LIGHTNING ARRESTORS

- PDM 4161 *Quantity:* _____
- PDM 4784 *Quantity:* _____
- PDM 4783 *Quantity:* _____
- I-0444 *Quantity:* _____
- PDM 4299 *Quantity:* _____
- PDM 4010 *Quantity:* _____
- I-0270 *Quantity:* _____
- PDM 3874 *Quantity:* _____
- I-0434 *Quantity:* _____
- PDM 5710 *Quantity:* _____
- PDMMX 0362 *Quantity:* _____
- PDM 8079 *Quantity:* _____
- PDM 8101 *Quantity:* _____
- PDM 8102 *Quantity:* _____
- PDM 8128 *Quantity:* _____
- PDM 8286 *Quantity:* _____
- PDM 8314 *Quantity:* _____

SINGLE & DOUBLE PIN INSULATORS

- PDM 4998-5001 *Quantity:* _____
- PDM 5637 *Quantity:* _____
- PDM 5638 *Quantity:* _____
- PDM 2514 *Quantity:* _____
- PDM 7860 *Quantity:* _____

SLEEVE & STIRRUP COVERS

- PDM 4748 *Quantity:* _____
- PDM 4637 *Quantity:* _____
- PDM 5029 *Quantity:* _____
- PDM 5381 *Quantity:* _____
- PDM 7754 *Quantity:* _____
- PDM 7995 *Quantity:* _____

SUBSTATION

WILDLIFE PROTECTION

- PDM 3892 *Quantity:* _____
- PDM 3891 *Quantity:* _____
- PDM 3890 *Quantity:* _____
- PDM 3889 *Quantity:* _____
- PDM 4749 *Quantity:* _____
- PDM 4747 *Quantity:* _____
- PDM 4746 *Quantity:* _____
- PDM 4745 *Quantity:* _____
- PDM 3888 *Quantity:* _____
- PDM 4116 *Quantity:* _____
- PDM 3887 *Quantity:* _____
- PDM 4744 *Quantity:* _____
- PDM 7729 *Quantity:* _____
- PDM 8049 *Quantity:* _____
- PDM 8050 *Quantity:* _____
- PDM 8209 *Quantity:* _____
- PDM 8251 *Quantity:* _____
- PDM 8287 *Quantity:* _____
- PDM 8288 *Quantity:* _____
- PDM 8289 *Quantity:* _____
- PDM 8394 *Quantity:* _____
- PDM 8402 *Quantity:* _____
- PDM 8518 *Quantity:* _____
- PDM 8596 *Quantity:* _____
- WLOP 0002 *Quantity:* _____
- WLOP 0003 *Quantity:* _____

NAME: _____ COMPANY: _____

FAX: _____ PHONE: _____ E-MAIL: _____

REQUESTED DELIVERY: _____

800.262.2111 • wildlifeoutageprotectors.com



Insulboot installation in New Jersey

WILDLIFE OUTAGE PROTECTORS...

Keeping the power on and wildlife safe!

Power outages caused by wildlife have long been a big and expensive problem for utility companies.

Our **Wildlife Outage Protectors** are designed to prevent electrocution of bird and animal wildlife and the resulting incidence of power outages.

Wildlife Outage Protectors are designed for years of effective service in all weather conditions. They are molded from Arbosol®, a proprietary polyvinyl chloride (PVC) material that produces a seamless, heavy duty, resilient molded product. It is formulated specifically for electrical applications at high voltages.

InsulBoot® also offers **heat shrink tubing, molded boots and tape** with a new **HALOGEN FREE polyolefin formula.**



Our products are built to work...and last.

- High dielectric strength
- Customized to fit your connections
- High dielectric strength
- Customized to fit your connections
- Wide temperature operating range
- Price quotes in 24 hours or less
- Proven, proprietary PVC materials
- Durable & Inexpensive
- Choice of colors
- Free design services



Visit our website at insulboot.com or contact us for more information.

INSULBOOT®
KEEPING THE POWER ON AND WILDLIFE SAFE! **WLOP**

37 Appletree Lane P.O. Box 450 • Plumsteadville, PA 18949
Phone 215.766.2020 • Toll-Free 800.262.2111
Fax 215.766.2222 • insulboot.com